

# DUKE TOWN



# DUKE TOWN

**Length:** 37.00 metres (121' 5")

**Beam:** 7.60 metres (24' 11")

**Draft:** 2.10 metres (6' 11")

**Number of Guests:** 10

**Number of Crew:** 8

**Built:** 2002

**Refit:** 2006

**Builder:** Heesen

**Naval Architect:** HEESEN

**Flag:** Cayman Islands

**Hull Construction:** Aluminium

**Hull Configuration:** Semi displacement

Air conditioning, Approved RYA water sports centre, Deck Jacuzzi, Stabilisers at anchor, Stabilisers underway, WiFi connection on board

speed, with a top speed of 19 knots and a cruising speed of 15 knots and her swim platform allows guests to enjoy an unique experience of the sea. located in the garage is an impressive array of water toys to keep you entertained during the day, a 6.5 metre tender, a wave runner, standup jet, skis and wakeboards, and inflatable toys for towing.

She offers a fantastic top deck jacuzzi area with a spacious sun pad with seatings and a bar.

The dining area aft of the bridge deck is the perfect spot to enjoy delicious alfresco meals, seating up to twelve guests. Duke Town has had a sky lounge refit in 2012, and recently had extensive interior fabric refit, new carpets, bed linens, towels, 2 newly refitted bathrooms in the guest cabins, and not to forget a new entertainment system and WIFI system upgrade!

---

Duke Town accommodates ten guests in five charming staterooms. The full-beam master stateroom includes an opulent his and hers bathroom. An oval shaped hallway leads to each en-suite cabin, two doubles and two twins.

She offers a full width sky lounge with all the amenities for relaxing and working, a spacious main salon and a dining room which can comfortably accommodate 12 guests.

Duke Town is a beautiful well balanced tri-deck super yacht with incredible volume for her size and has an impressive deck area for sunning, dining and relaxing. She has a good

# KEY FEATURES

- 1** Three spacious deck
- 2** Top deck with Jacuzzi, fully stocked bar, and a sun pad
- 3** Large swimming platform - great for family fun
- 4** An extensive array of water toys - RYA center
- 5** Full master cabin
- 6** Full beam sky lounge
- 7** Zero speed stabilization to ensure comfort at anchor and whilst underway
- 8** Updated satellite, GSM, WIFI and AV system to keep you connected



Master cabin full beam



Master cabin



# SPECIFICATIONS

## ACCOMMODATION

**Number of Guests:** 10

**Number of Cabins:** 5

**Cabin Configuration:** 3 Double, 2 Twin

**Bed Configuration:** 1 King, 2 Queen, 4 Single

## EQUIPMENT

**Engines:** MTU 12V 396TE94

**Cruising Speed:** 15 knots

**Fuel Consumption:** 300 Litres/Hr

## WATERSPORTS

**Tenders + Toys:** 1 TENDER NORUVANIA 5.50 METERS

ENG F115

1 SEADOO SPARK

1 KAWASAKI STAND UP JET

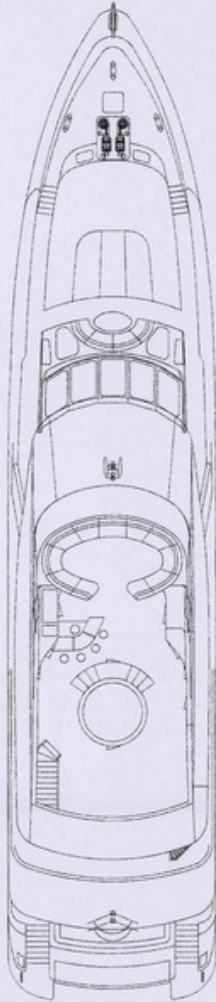
1 SEABOB

SKIS AND WAKE BOARDS

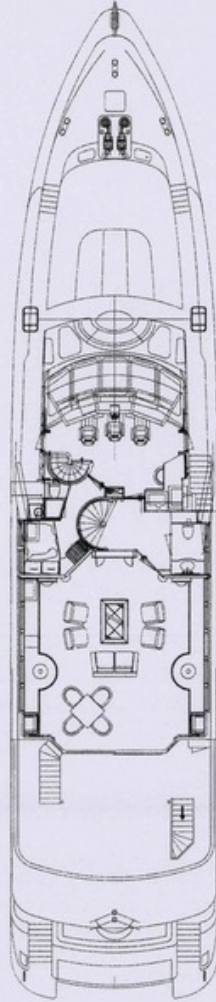
INFLATABLE TOYS FOR TOWING

SNORKELING EQUIPMENTS

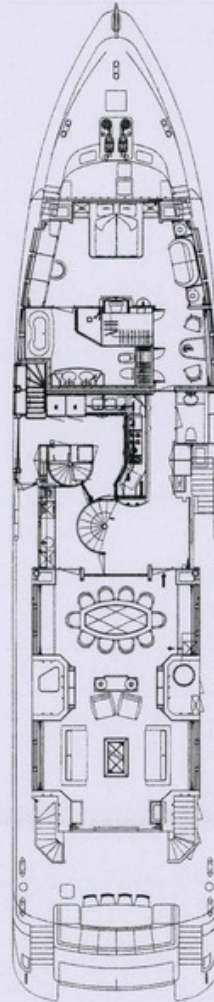
# LAYOUT



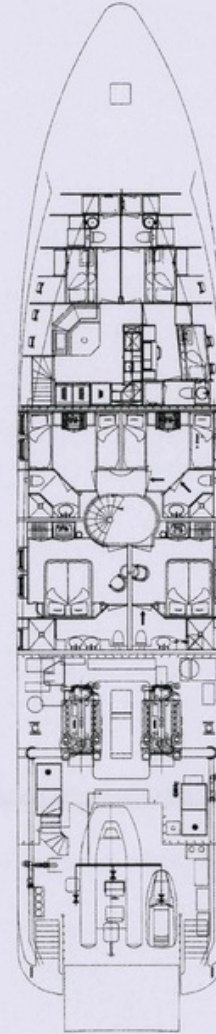
FLY BRIDGE DECK



WHEELHOUSE DECK



MAIN DECK



LOWER DECK



Bespoke Yacht Charter  
58-60 Kensington Church Street  
UK, London, W8 4DB  
Tel: +44 20 7368 3328  
info@bespokeyachtcharter.com  
www.bespokeyachtcharter.com

## **Disclaimer**

This document is not contractual. All specifications are given in good faith and offered for informational purposes only. The publisher and company do not warrant or assume any legal liability or responsibility for the accuracy, completeness, or usefulness of any information and/or images displayed. Yacht inventory, specifications and charter prices are subject to change without prior notice. None of the text and/or images used in this brochure may be reproduced without written consent from the publisher.