



TORTOISE

Length: 35.00 metres (114' 10")

Beam: 8.20 metres (26' 11")

Draft: 2.7 metres (8' 8")

Number of Guests: 12

Number of Crew: 7

Built: 2015

Refit: 2017

Builder: Arcadia Yachts

Naval Architect: Francesco GUIDA

Flag: Marshall Islands

Hull Construction: GRP

Hull Configuration: Semi displacement

Air conditioning, Deck Jacuzzi, Gym/exercise equipment, Stabilisers at anchor, Stabilisers underway, WiFi connection on board

TORTOISE is a brand new luxury yacht emphasizing natural light and open space living. Modern and innovative in design, The Arcadia 115' provides generous and comfortable cruising while remaining kind to the environment. The unique Arcadia Construction System incorporates patented solar panels as well as a carbon neutral construction foot print.

M/Y TORTOISE can welcome up to 12 guests in 5/6 cabins nicely decorated by "Missoni".

The Master Cabin on the main deck has a private office & gym equipment (interior bike - free weight), wardrobe and ensuite bathroom with a shower.

On the lower deck we have 2 VIP Cabins with a closet, an ensuite bathroom with shower and 2 Twin Cabins with a pullman bed, a closet and an ensuite bathroom with shower

On the upper deck this is the Captain Cabin which can be used as a guest cabin as long as there is no night cruise.

All Beauty product are from Fragonard France.

KEY FEATURES

- 1** very low fuel consumption
- 2** Stabilizers "zero-speed"
- 3** Hydraulic balcony/terrace in the dining area & Hydraulic up and down aft platform
- 4** A large main deck and bright sky lounge
- 5** Interiors light & bright, Volumes very well maximized
- 6** A unique area of more than 140 sqm: interior and exterior spaces for getting together
- 7** A limitless experience, where spaces are connected and become one



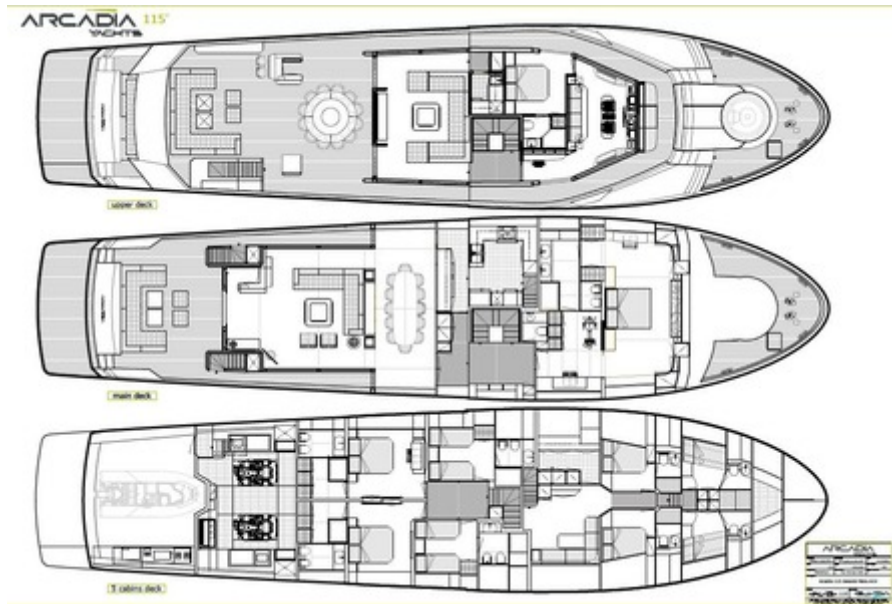












SPECIFICATIONS

ACCOMMODATION

Number of Guests: 12

Number of Cabins: 6

Cabin Configuration: 4 Double, 2 Twin

Bed Configuration: 2 Pullman, 1 King, 3 Queen, 4 Single

EQUIPMENT

Engines: Engines : 2 x 1200 Hp MAN V8

Generators : 2 x 40 Kw KOHLER

Stabilizers at sea & "zero speed"

Cruising Speed: 12 knots

Fuel Consumption: 190 Litres/Hr

WATERSPORTS

Tenders + Toys: 445 Williams Turbo Jet tender (2016)

1 x waverunner (*)

2 x seabob F5

1 x Wakeboard

2 x Waterskis (children & adult)

2 x inflatable toys (buoys)

Snorkeling equipment (several sizes)

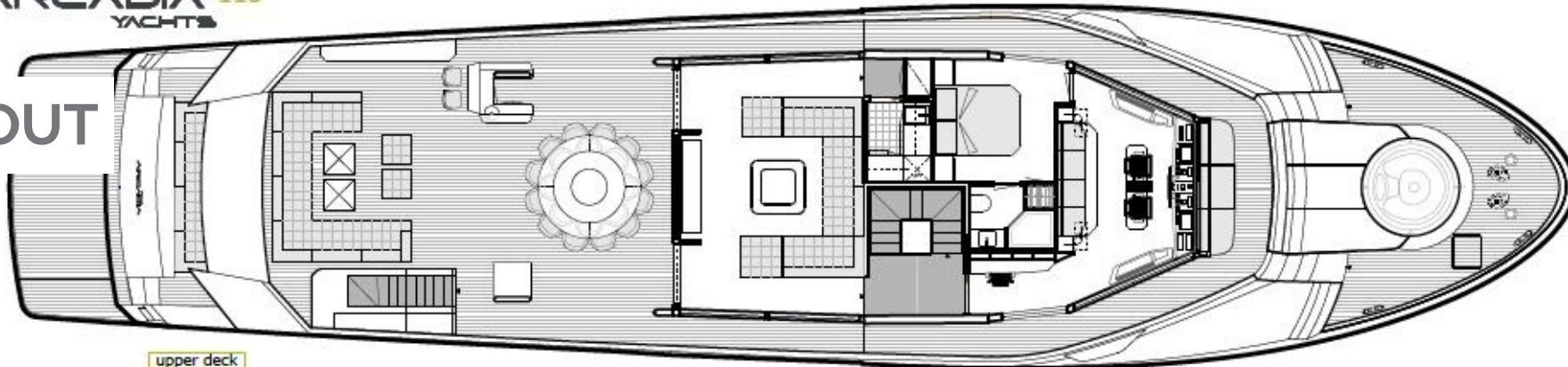
(*) The use of Personal Watercraft (Jet Ski – Wave runner) is only permitted to the operator having the appropriate Personal Water Craft license and meeting with the local operating regulations.

Jacuzzi on the main deck

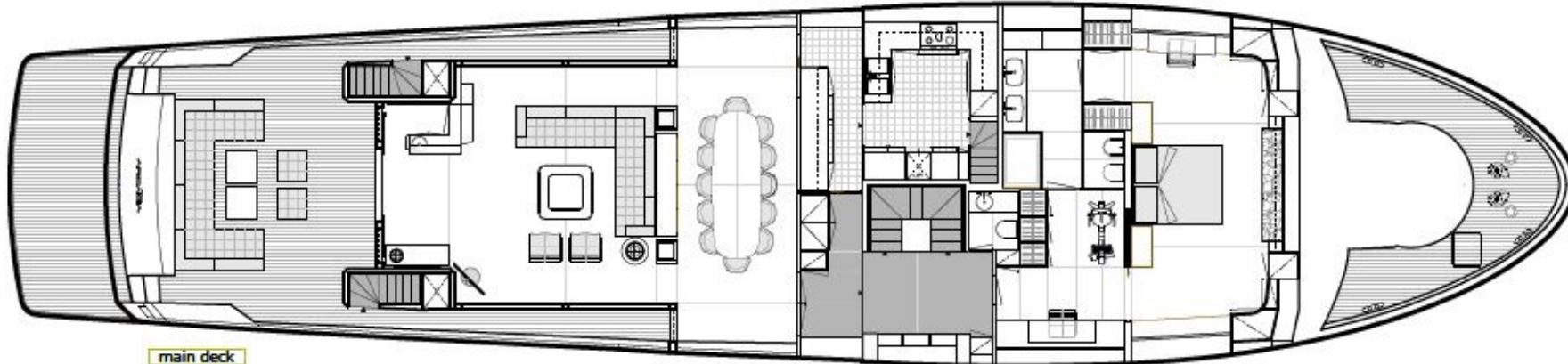
ARCADIA 115'

YACHTS

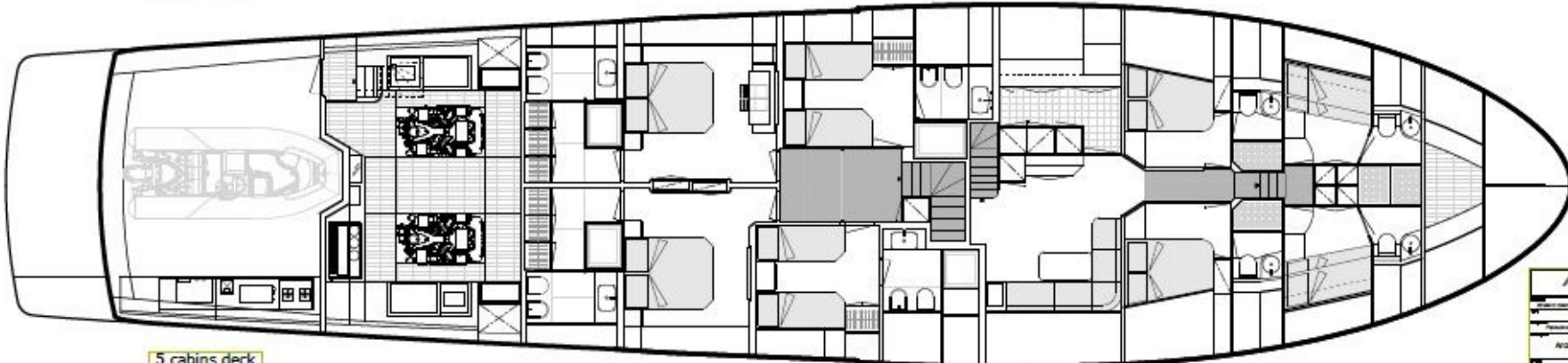
LAYOUT



upper deck



main deck



5 cabins deck

ARCADIA 115'	
Model	ARCADIA 115'
Length	115'
Beam	30'
Max. Draft	6'
ARCADIA 115' GRAND PRIX ACB	
ARCADIA 115'	ARCADIA



Bespoke Yacht Charter
58-60 Kensington Church Street
UK, London, W8 4DB
Tel: +44 20 7368 3328
info@bespokeyachtcharter.com
www.bespokeyachtcharter.com

Disclaimer

This document is not contractual. All specifications are given in good faith and offered for informational purposes only. The publisher and company do not warrant or assume any legal liability or responsibility for the accuracy, completeness, or usefulness of any information and/or images displayed. Yacht inventory, specifications and charter prices are subject to change without prior notice. None of the text and/or images used in this brochure may be reproduced without written consent from the publisher.